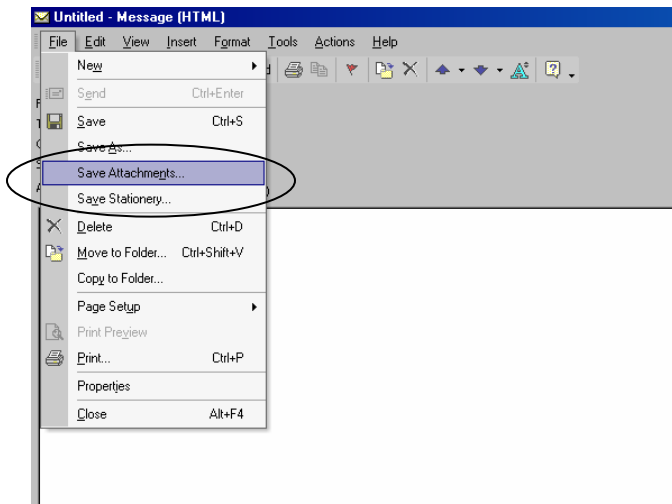
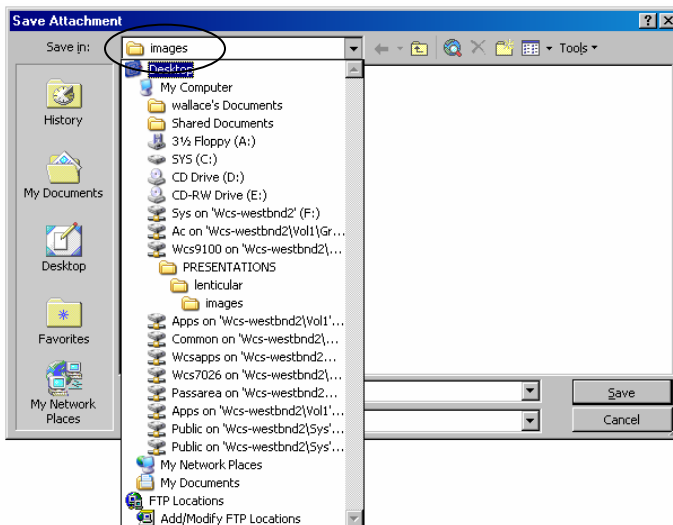


CHANGING THE DEFAULT PROGRAM THAT IS ASSOCIATED WITH THE .GIF FILE EXTENSION

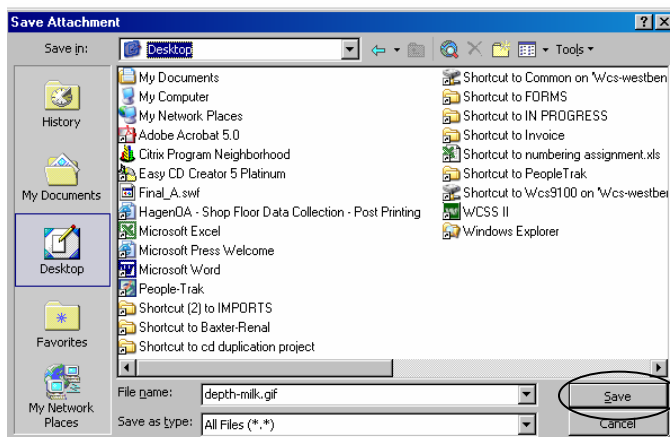
1. Open your email message with the attachment(s).
2. Click on FILE.
3. Click on SAVE ATTACHMENTS.



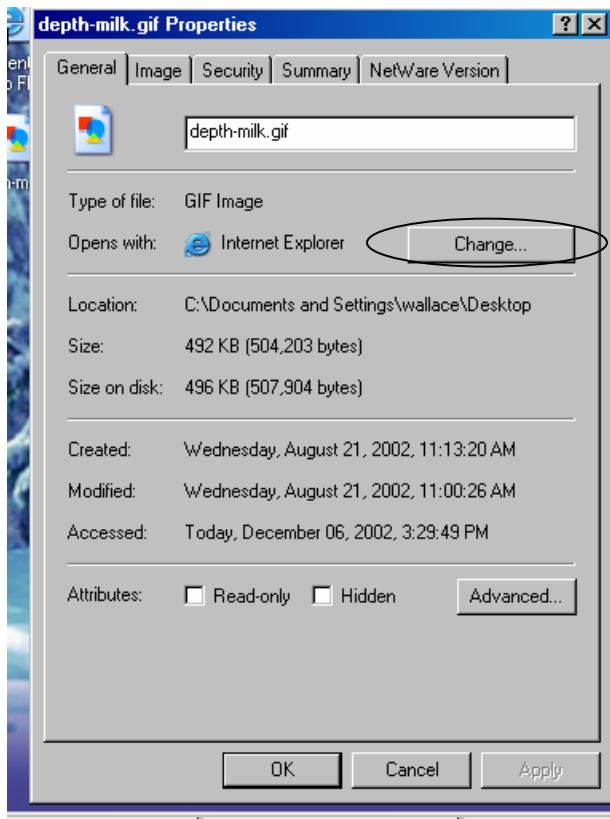
4. Click on the arrow on the SAVE IN drop down box.
5. Click on DESKTOP to save the attachments to your desktop.



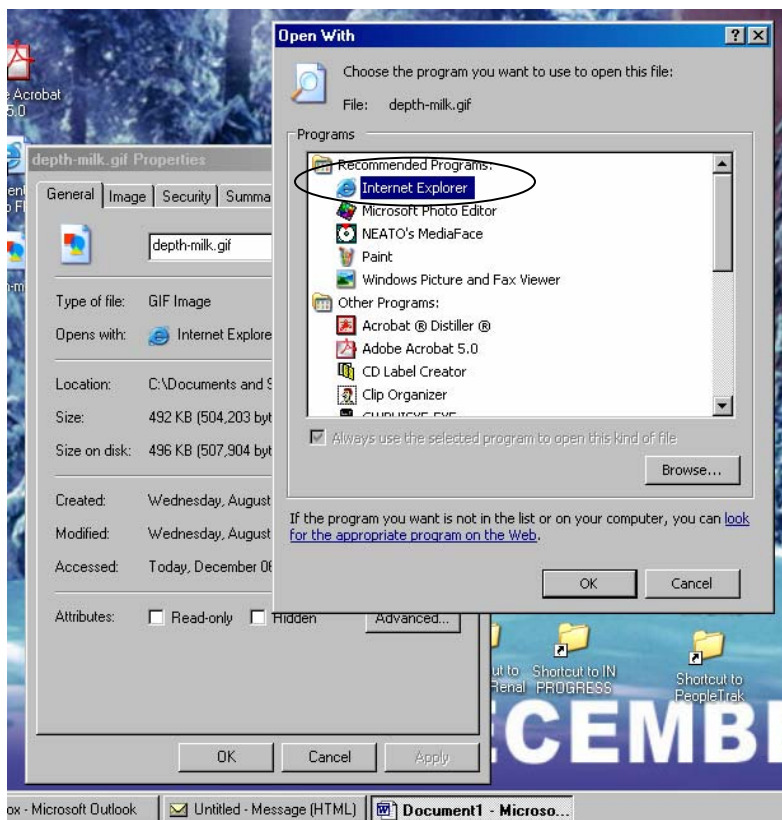
6. Then click on the SAVE button.



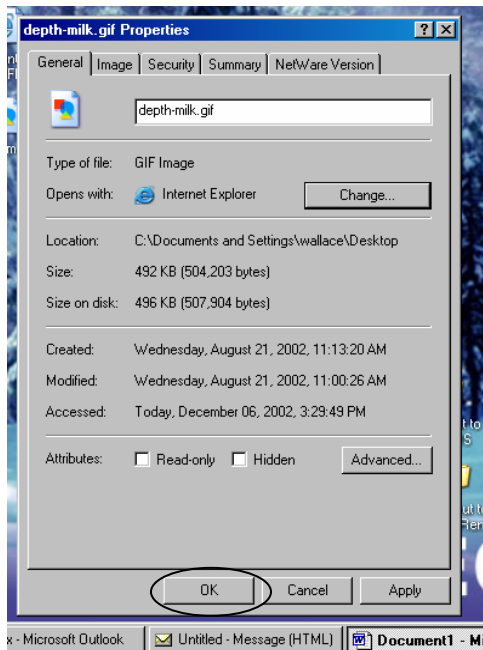
7. Minimize or close all screens and go to your Desktop.
8. Locate the .gif file that you just saved.
9. Right-mouse click on the file.
10. Click on PROPERTIES.



11. Click on the CHANGE button.
12. Locate the INTERNET EXPLORER in the list.
13. Click OK.

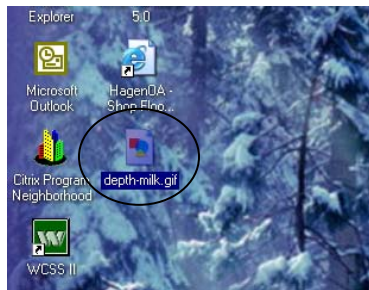


14. Click on OK.

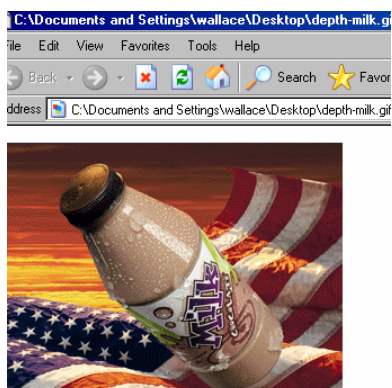


15. Locate the file that is saved on your desktop.

16. Double-click on it to open it.



17. The .gif file will open in the Internet Explorer and will have animation.



Note: Once these instructions are complete, your .gif files will always open in Internet Explorer.